



Casa Paganini – InfoMus Lab  
 DIST – University of Genova  
[www.infomus.org](http://www.infomus.org) [www.casapaganini.org](http://www.casapaganini.org)

## EyesWeb Week 2010 – Track 2

### Advanced use of EyesWeb for expressive gesture processing and social interaction analysis

Gualtiero Volpe, Barbara Mazzarino, Giovanna Varni

February 2010

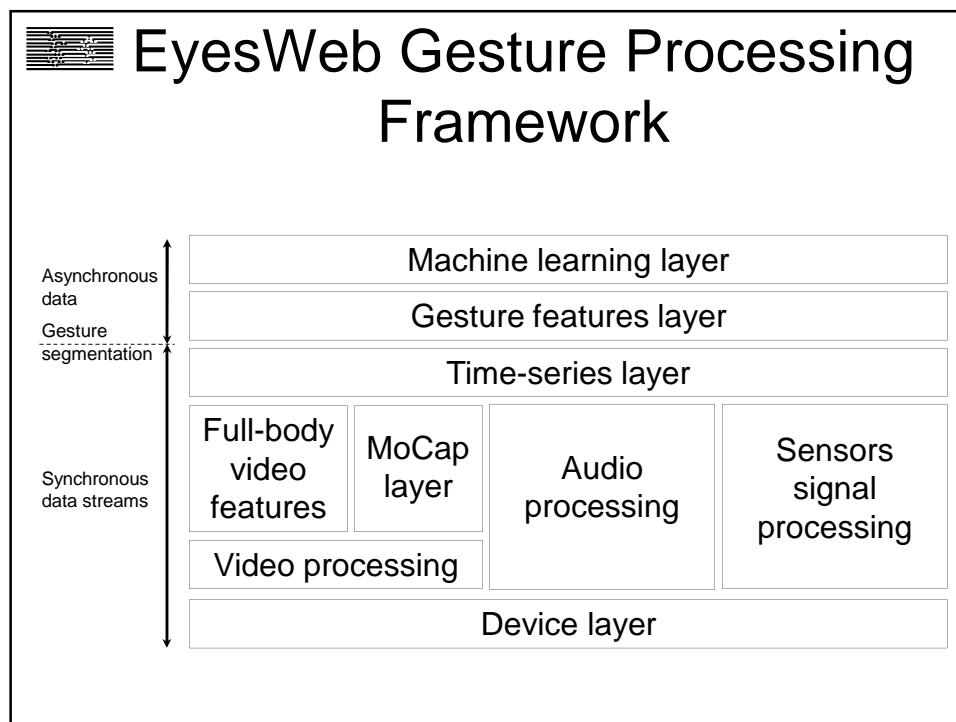
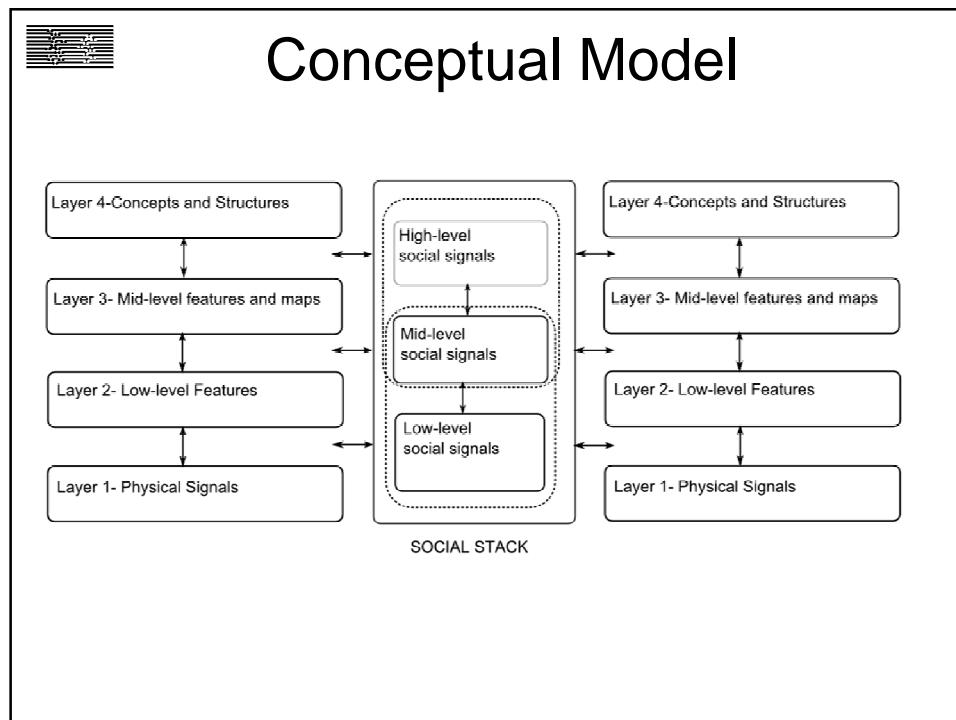


## Research on non-verbal expressive gesture

Based on cross-fertilisation of science/engineering with  
 humanistic theories: music performance (e.g. Shaeffer's  
 Morphology), dance (e.g. Laban's Effort Theory).

Focus on non-verbal multimodal interaction:

- Gesture in music performers (contributions to digital luthery)
- Inner (or alluded) gesture in the music signal
- Human movement and gesture in dancers, on stage performers  
 and actors, in museum visitors
- Interaction models
- Entrainment: duo of musicians or dancers; musician - audience
- Interactive narrative structures, context sensitive analysis
- Spectators' interfaces

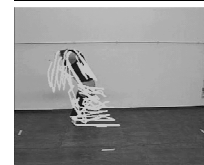




## Video Processing Layer

- Usual basic steps:
  - Background segmentation  
–> Blobs
  - Blob tracking
- Output
  - Processed images, e.g., silhouettes
  - Trajectories of points
  - Bounding rectangles
  - Contours, convex hulls, ...

Different from MoCap approaches!



## For more info...

- [www.infomus.org](http://www.infomus.org)
- [www.casapaganini.org](http://www.casapaganini.org)
- [www.eyesweb.org](http://www.eyesweb.org)
- [gualtieri.volpe@unige.it](mailto:gualtieri.volpe@unige.it)
- [info@infomus.org](mailto:info@infomus.org)